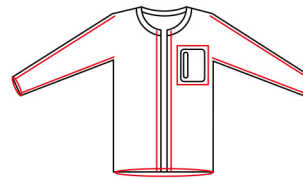
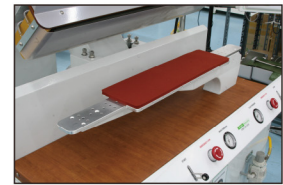




## Wedge welding Machine HTM-709/709L



Cooling  
Heating



\*709L : 1300x150

SIZE : 1180 X 1190 X 1520 (mm)	POWER : 1P, 220V, 3.5 K
PLATE SIZE : 850 X 150 (mm)	AIR : 3HP / 1set
MAX TEMP : 250°C	AUTO SLIDE COOLING
* The operator should arrange the temperature & speed according to the fabrics & glue.	



## Wedge welding Machine HTM-708



SIZE : 1180 X 1190 X 1520 (mm)	POWER : 1P, 220V, 3.5 K
PLATE SIZE : 850 X 250 (mm)	AIR : 3HP / 1set
MAX TEMP : 250°C	AUTO SLIDE COOLING
* The operator should arrange the temperature & speed according to the fabrics & glue.	