



## SS 3400-EX-IX

SERGING AUTOMAT WITHOUT LINING



### PERFORMANCE

900 trousers with 4 sides without lining / 8 hours

110 trousers with 4 sides without lining / 1 hour



The sewing unit SS 3400 - EX - IX is for automatic serging of trousers without lining as well as skirts and small pieces. The Pegasus EX 5204 head on the automat offers excellent solution for the very fast and rational serging of front and hind trousers parts; skirts and small pieces. The automat has the capability to start the right side leg from the top and left side from the bottom depending on the application.

## TECHNICAL SPECIFICATIONS

- Pegasus EX 5204, three thread overlock machine head
- Fabric edge controller which regulates and guides the entry of the work into the machine.
- Stitching start automatic with photocell feeding
- Long version Machine, Chassis with adjustable height
- Universal Stacker Unit
- Beijer , Windows Based 256 Million Colour Supported Touch screen Control Panel
- Easy to use, with Pictures on the Operator Panel and with 50 Different Programming
- Feature to operate with all sides in order/cycle programming
- PLC Control Unit
- Efka 550 W Mini Stop DC Servo Sewing Motor
- Thread cutting and suction at stitch beginning and end
- Regular seam widths
- Air blowing holes over the table top provides the easy flow of fabric to the back.
- Fabric holder piston
- Pneumatic stacker
- Short instruction times due to easy handling
- Extra working table
- Yarn waste compartment



## OPTIONS

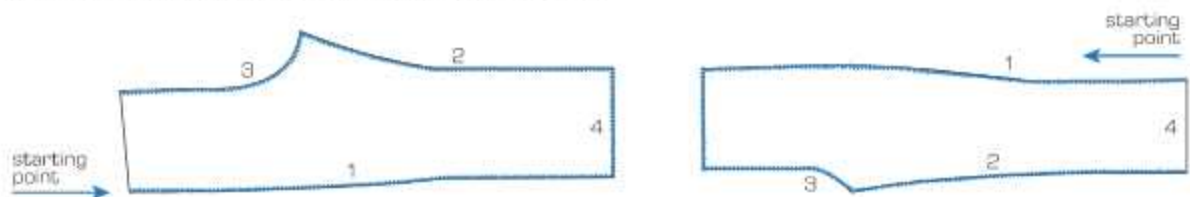
- Stitch Widths: 4mm / 5mm or 6mm Head Plate

## AREAS OF USAGE

- Trousers without lining for men and women, skirts and various small pieces

## ADVANTAGES

- The curves on the crotch area can be sewn with high speed and precision
- The pre-programming from the Control Panel allows cycle sewing of varying sides of leg panels
- Pegasus EX 5204 is a very fast , flexible and efficient head and the together with programmable control panel it provides unmatched speed and efficiency compared to manual operation

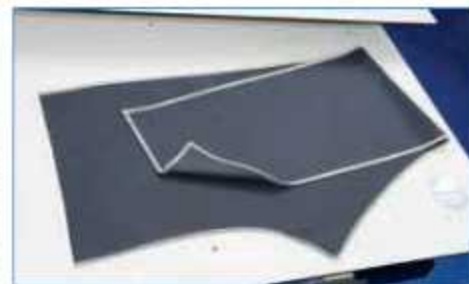
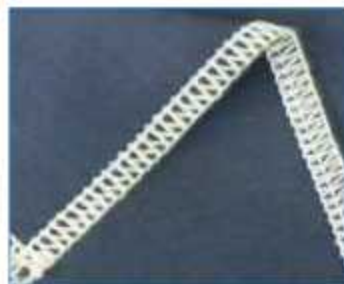
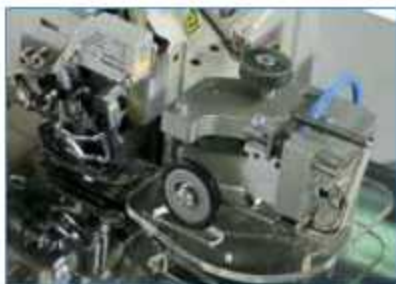


## TECHNICAL DETAILS

Max. Sewing Speed : 6.000 r.p.m  
 Max. Stitch Length : 1 or 3,8 mm  
 Connection Voltage: AC 230 V, 50/60 Hz  
 Air Pressure : 6 bar

## DIMENSIONS

L: 155 cm / W: 105 cm / H: 120 cm  
 Packing Size : 186 cm x 117 cm x 145 cm  
 Machine Net Weight : approx. 145 kg  
 Machine Gross Weight : approx. 185 kg





## SS 5400 - EXT - IX

SERGING AUTOMAT WITH OR WITHOUT LINING



### PERFORMANCE

2600 - 3000 Pieces with Lining / 8 hours

3600 - 4000 Pieces without Lining / 8 hours

325 - 375 Pieces with Lining / 1 hour

450 - 500 Pieces without Lining / 1 hour

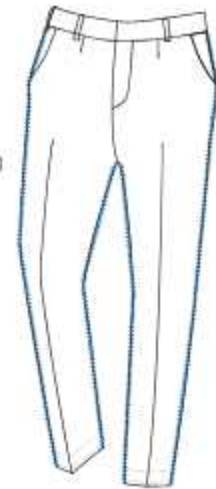
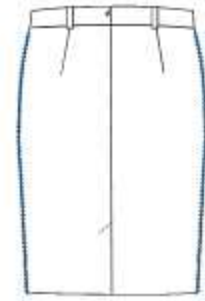




This sewing unit is for automatic side serging of trousers with interlining on the front piece of trousers. Its differential top and bottom feed offers excellent solutions for the flawless serging of front and hind trousers parts. The unit also perfectly serges the pieces without lining.

## TECHNICAL SPECIFICATIONS

- The SS 5300-EXT-IX is an overlock unit with integrated DC sewing motor.
- **Pegasus EXT 5204** three thread overlock machine head with top and bottom transport.
- Long version Machine, frame with adjustable height.
- **Beijer** , Windows Based 256 Million Colour Supported Touch screen Control Panel
- Easy to use, with Picturas on the Operator Panel and with 50 Different Programming/Cycle Sewing
- Feature to operate with all sides in order/cycle programming
- PLC Control Unit.
- **Efka 550 W** Mini Stop DC Servo Sewing Motor
- Stitching start automatic photocell feeding
- Thread cutting and suction at stitch beginning and end
- Fabric edge controller which regulates end guides the entry of the work into the machine. Regular seam widths
- Air blowing units over the table top provides the easy flow of fabric to the back.
- Top palette carrier with step engine controller moving the work to the stacker
- Graphic program for using the bottom and top fullness on desired places
- Differential top-bottom feed with step motor for different fullness values in the processing of knee lining
- Differential top-bottom feed with step motor enables the processing of stretch materials
- Pneumatic fast stacking
- Short instruction times due to easy handling
- Extra working table
- Yarn waste compartment.

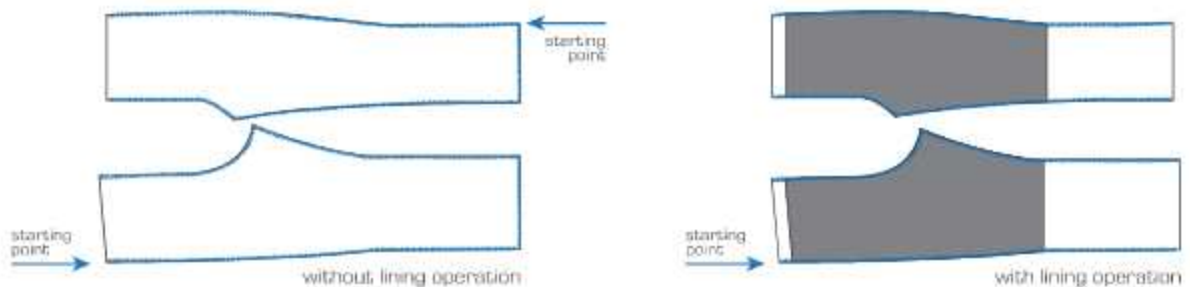


## OPTIONS

- Universal Stacker Unit
- Stitch Widths: 4mm / 5mm or 6mm Head Plate

## AREAS OF USAGE

Trousers with or without lining for men and women



## TECHNICAL DETAILS

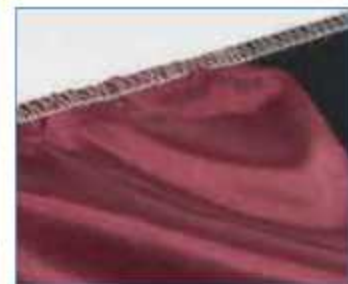
Max. Sewing Speed : 8.500 r.p.m  
 Stitch Length : 1.0mm or 4.0mm  
 Connection Voltage: AC 230 V, 50/60 Hz  
 Air Pressure : 6 bar

## DIMENSIONS

L: 155 cm / W: 105 cm / H: 120 cm  
 Packing Size : 186 cm x 117 cm x 145 cm  
 Machine Net Weight : approx. 145 kg  
 Machine Gross Weight : approx. 185 kg



without Lining



with Lining